An architectural rendering of a tall, cylindrical lighthouse hotel perched on a mountain peak. The building has a spiral staircase on its exterior and a glass-enclosed observation deck at the top. The scene is set against a dramatic sky with large, white, billowing clouds and a bright light source on the left, creating a high-contrast, atmospheric effect. The foreground shows the dark, rocky slopes of the mountain with some white, brush-like strokes. The overall style is a detailed architectural sketch with a focus on light and shadow.

LE MASSIF PROJECT - CANADA

360° Lighthouse HOTEL

BY HEINZ JULEN

Julen

LE MASSIF PROJECT - CANADA

360° lighthouse HOTEL

BY HEINZ JULEN

CONTENT

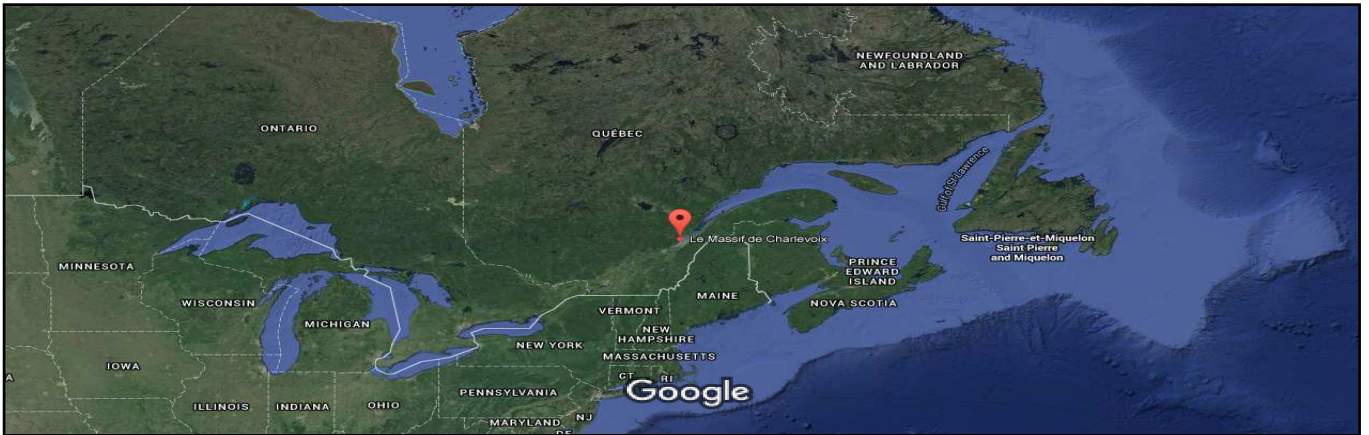
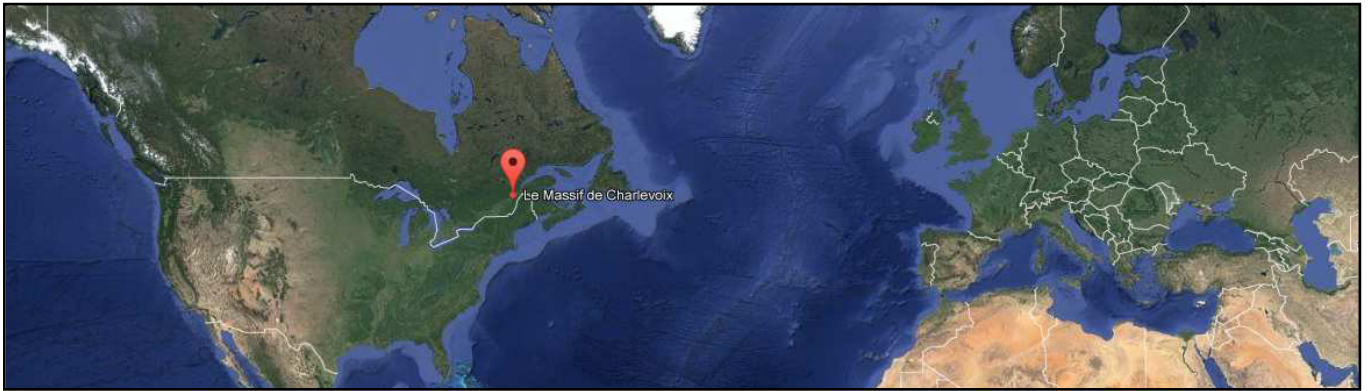
INTRODUCTION

LOCATION	site. 4 - 7
HISTORY	site. 8 - 11
PRE WORD HEINZ JULEN	site.12- 15
DESIGN CONCEPTS HEINZ JULEN	site.16- 17

FLOORPLANS

SECTIONAL CUT	site.18
SUITE LEVELS	site.19 - 20
RESTAURANT - LOBBY - WELLNESS- TECH	site.21 - 25
BIOGRAPHIE	site.26 - 30
STUDIES	site.31 - 35

LOCATION
INTRODUCTION



Le Massif de Charlevoix ski area

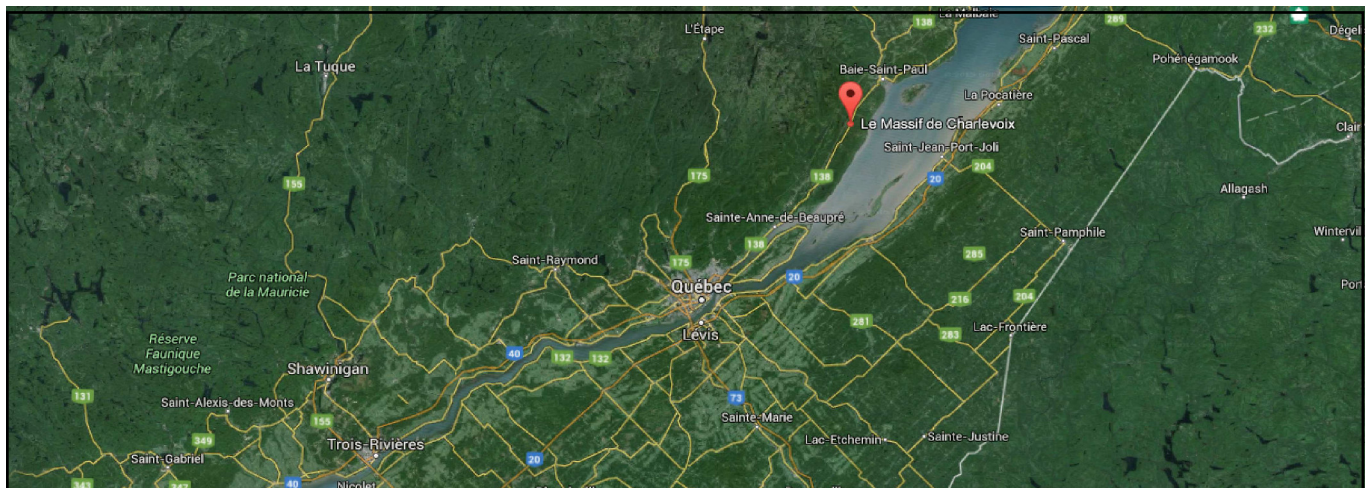
is located in Petite-Rivière-Saint François, Charlevoix, Québec, a 50-minute drive from Quebec City. Its vertical drop is 770 m (2,526 ft), the highest in Eastern Canada and east of the Rockies. It is one of the few ski areas that is accessible from both the base and summit.

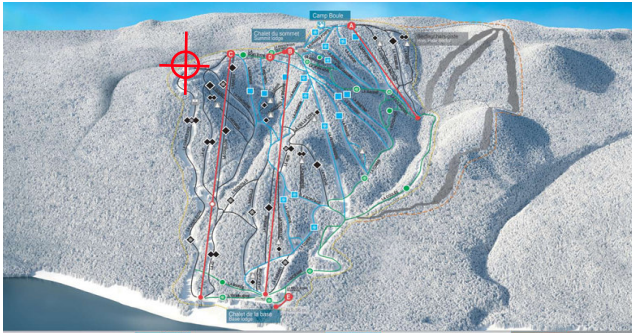
Skiing season usually lasts from early December to late April. Le Massif de Charlevoix's has an above average annual snowfall compared to other ski areas in Eastern Canada with a five year average of 645 cm (250 in). While the snow pack at the summit can exceed 240 cm (90 in) in a typical winter, the base is near sea level and can quickly begin to melt by April.

La Charlevoix, the steepest trail with a pitch of 64%, is home to the only alpine training center east of the Rockies for Canada's athletes:

The resort stretches from the top of the escarpment (actually a half-graben) to the bottom where the Saint Lawrence River flows past.

Source : Wikipedia





Boasting

the highest vertical drop in Canada east of the Rockies, Quebec's Le Massif has a lot more to offer than just breath taking views overlooking the beautiful St. Lawrence River.

It s also well known for an above average annual snowfall: a fact that has locals bragging about the abundant number of powder days they receive, which in turn provide the best freeriding conditions you could imagine on the eastern side of the country.

But the past few seasons have seen this shift slightly as the resort has made vast improvements to its terrain park, accommodating those who prefer park riding over powder days or the combination of both. And seeing that it takes less than an hour from Quebec City to reach Le Massif, its park has begun growing in popularity.

For the 2008-09 season Le Massif has redesigned, relocated and expanded its park, which is now located off of the Camp-Boule Express chairlift.

Unique to Le Massif is its location in an area that has been designated a UNESCO World Biosphere Reserve.

The goal of the biosphere reserve is not only the protection of the environment but increasing the harmony between people and nature in the given area.

For this reason the resort does not offer night riding. All park laps take place under the sun. ..



History

Skiing at Le Massif de Charlevoix started

at the end of the 1970s, with snowmobiles towing groups of skiers from the main road at the top and a van serving as the lift.

In the early 1980s, commercial operations started with la Société de développement du Massif.

Starting in 1983-1984, school buses were used to drive skiers from the base to the top after each run.

In the summer of 1992, two chairlifts were installed: a high-speed quad and a fixed-grip double.

2001 was a year of significant change for Le Massif de Charlevoix. A new road was built from Route 138 to the top of the mountain. The distance between Quebec City and Le Massif de Charlevoix summit was then reduced to 70 km (43 mi) instead of the 95 km (60 mi) previously needed to reach the base via the village of Petite-Rivière-Saint-François. At the same time, The Cap Maillard was raised by 35 m (115 ft) to create La Charlevoix, an FIS standard downhill trail mapped by alpine course designer (and champion) Bernhard Russi. It hosted the speed events of the 2006 Junior World Championships, with technical events at Mont-Sainte-Anne.

Source : Wikipedia



However,

La Charlevoix was deemed unsuitable for hosting an Olympic downhill men's event hurting Quebec City's chances at hosting a Winter Olympics.

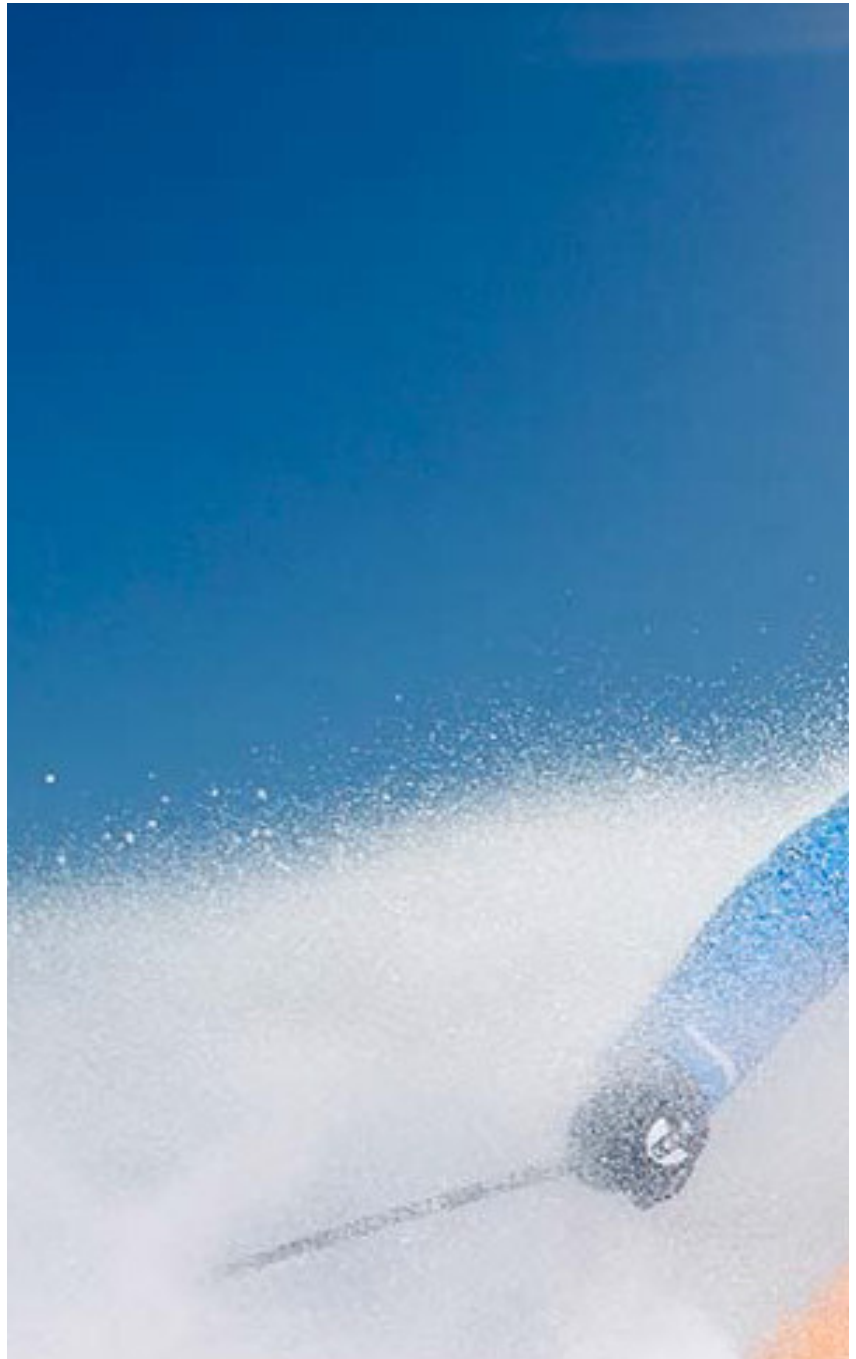
Daniel Gauthier, co-founder of Cirque du Soleil, bought Le Massif de Charlevoix in 2002.

Daniel Gauthier is no longer a co-owner of Cirque du Soleil and has used part of the proceeds of the sale of his participation in that venture to purchase Le Massif.

In 2005, Jean-Luc Brassard, the 1994 Olympic Champion in freestyle mogul skiing, became a spokesman for Le Massif de Charlevoix.

In 2009, after a record snowfall of 915 cm (360 in), Le Massif de Charlevoix added 26 acres (11 ha) of backcountry skiing on Mount A Liguori.

Beginning in September 2011, a new tourist train service from Quebec City began operation, making a stop in the winter at Le Massif de Charlevoix.





Prelude Heinz Julen

LE MASSIF PROJECT

360° LIGHTHOUSE HOTEL

When, a few years ago, the famous co founder of Cirque des Soleil Daniel Gauthier aquired the whole ski area of Le Massif he was overcome by a great vision.

In this unique place where he is emotionally deeply connected, it was his dream to create a classy recreation area. Where sport, music, theatre and lifestyle can be placed in an urban framework.

To meet this goal, he organised a creative workshop to which he invited internationally renowned sportsmen and women, artists, architects and entrepreneurs to develop a master plan for this project.

After meeting me at a lecture at Montreal university, Daniel Gauthier invited me spontaneously to this creative workshop. There we had the opportunity to get to know and love the whole area of Charlevoix.

From the first moment I was fascinated by a man made pyramid built on the far corner of the most spectacular ski run of the area.

So my first question to Daniel was ...



„How come someone came to build a pyramide there?“

The reason is very simple.

At the top of the plateau a man made lake was created for the purpose of storing water for the artificial snow making machines.

What was excavated from the lake was placed on the uppermost part of the difficult grade ski run in such a way that it extended it by 50 vertical meters, thus making it legitimate by the international FIS Ski regulations for the World Cup races to be conducted here.

From the beginning I saw this pyramid as a great opportunity for the whole area. From the first moment, I saw up there a hotel with great charisma. A lighthouse, which shines over the whole area and communicates to the world!

Daniel Gauthier always took note of my thoughts. But it was decided to rebuild the area from the bottom up, step by step. So they began with „La Ferme“ hotel from the at the bottom of the Bay. The train from Quebec to Charlevoix was also developed. New lifts were created and the ski pistes were expanded and made more attractive.

Without a doubt, this area is now one of the most spectacular in Eastern Canada, being nearby major centers such as Quebec, Montreal or even the USA, like New York etc. But somehow, there is something missing for me; It is this special hotel in this unique pyramid! When I spoke to Daniel again he said this:

„Heinz, I will gift you this pyramid, if you find someone to develop and finance your hotel!“

And so I ventured forth with the first design ideas. It is a hotel tower, which once a day rotates on its axis- a rotating hotel- have fun watching !

Heinz Julen

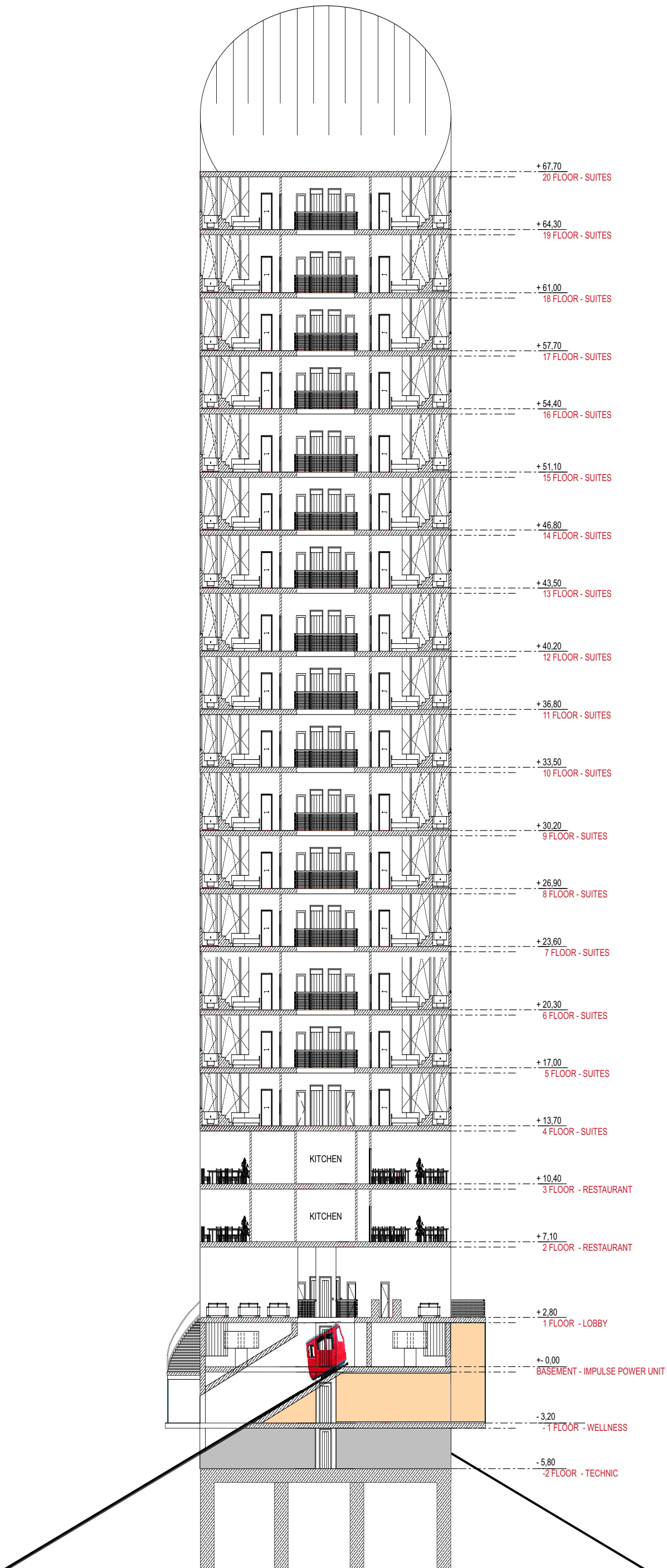


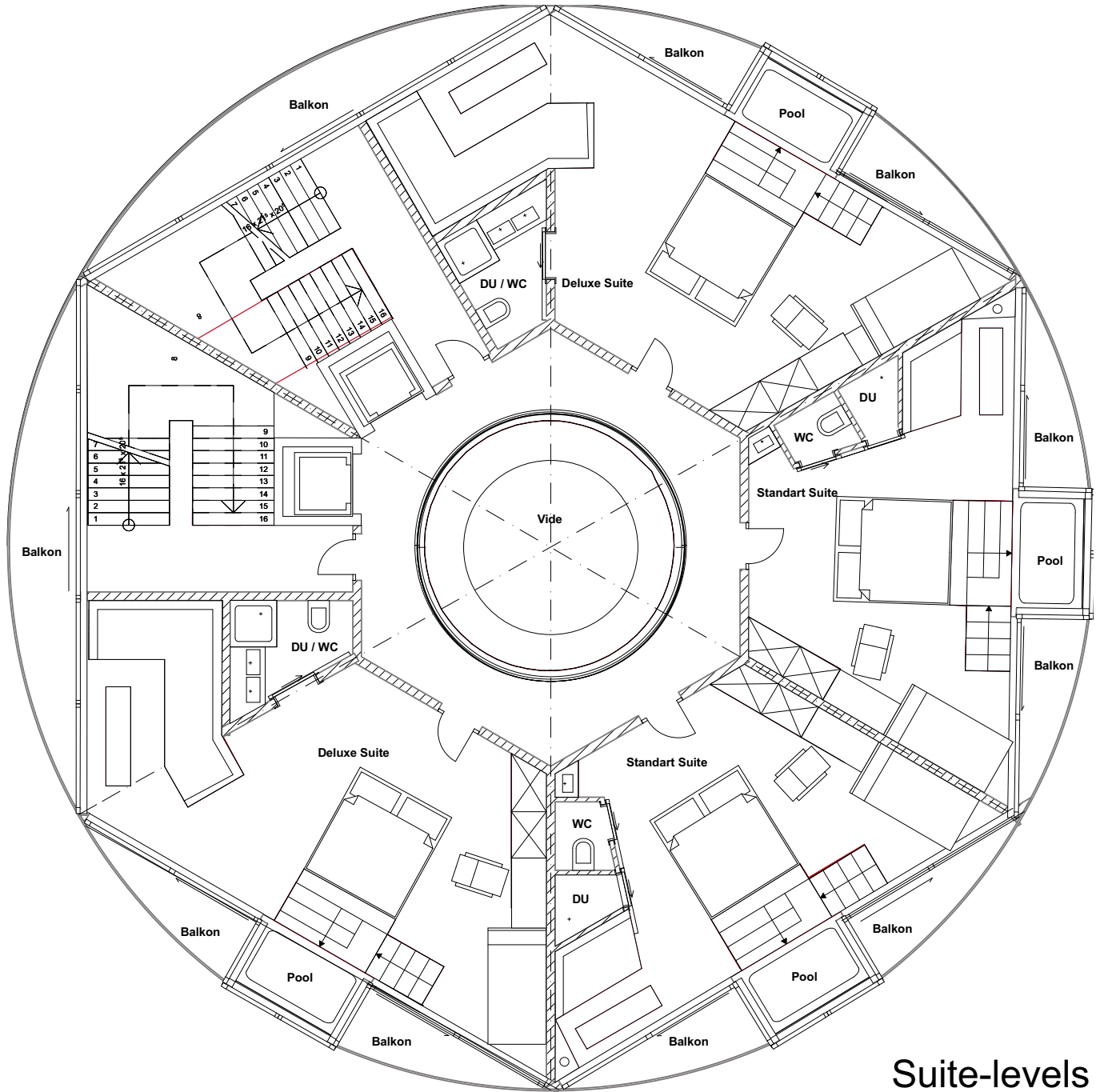
J. Hill



Design Concept
Heinz Julen







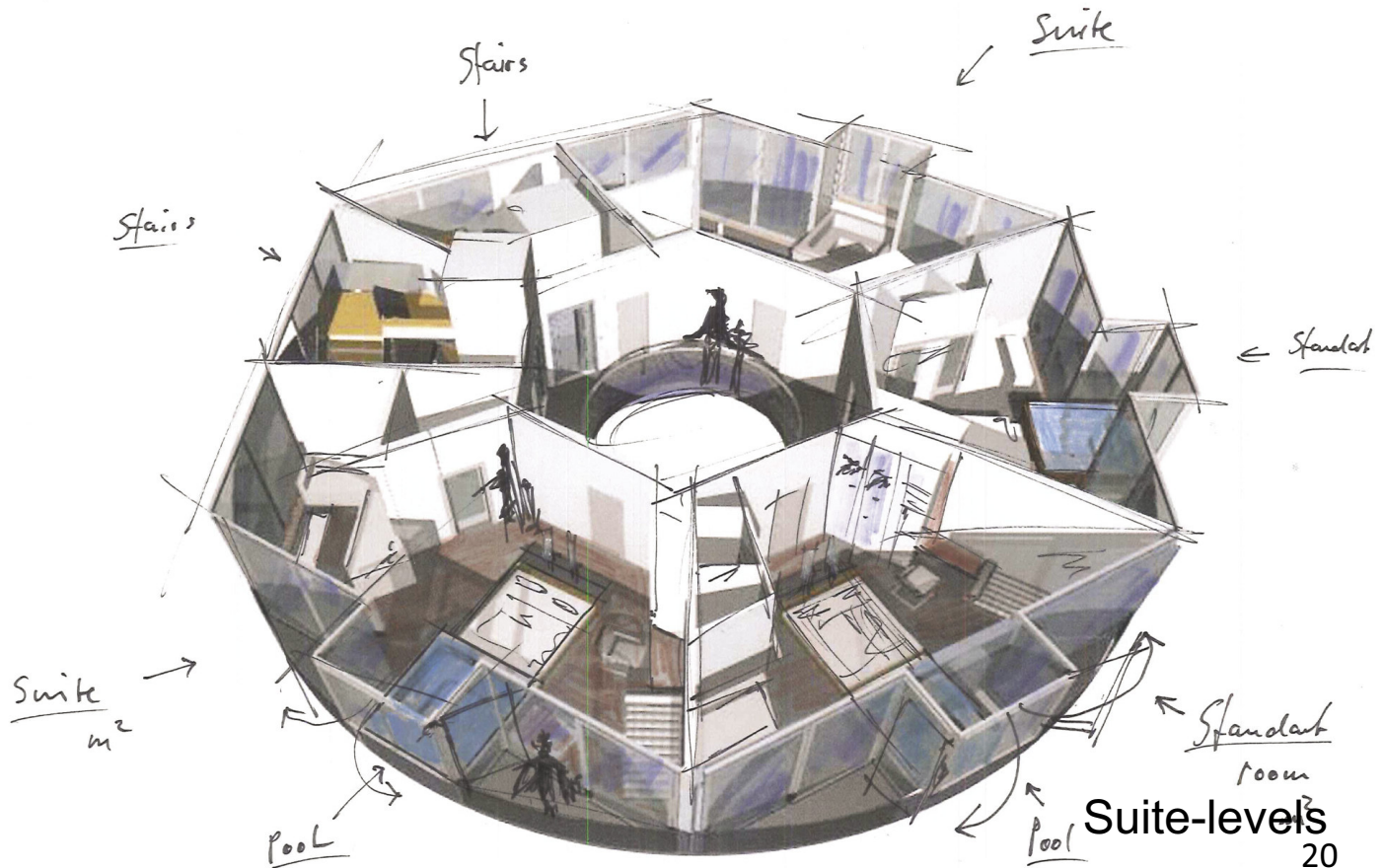
Suite-levels

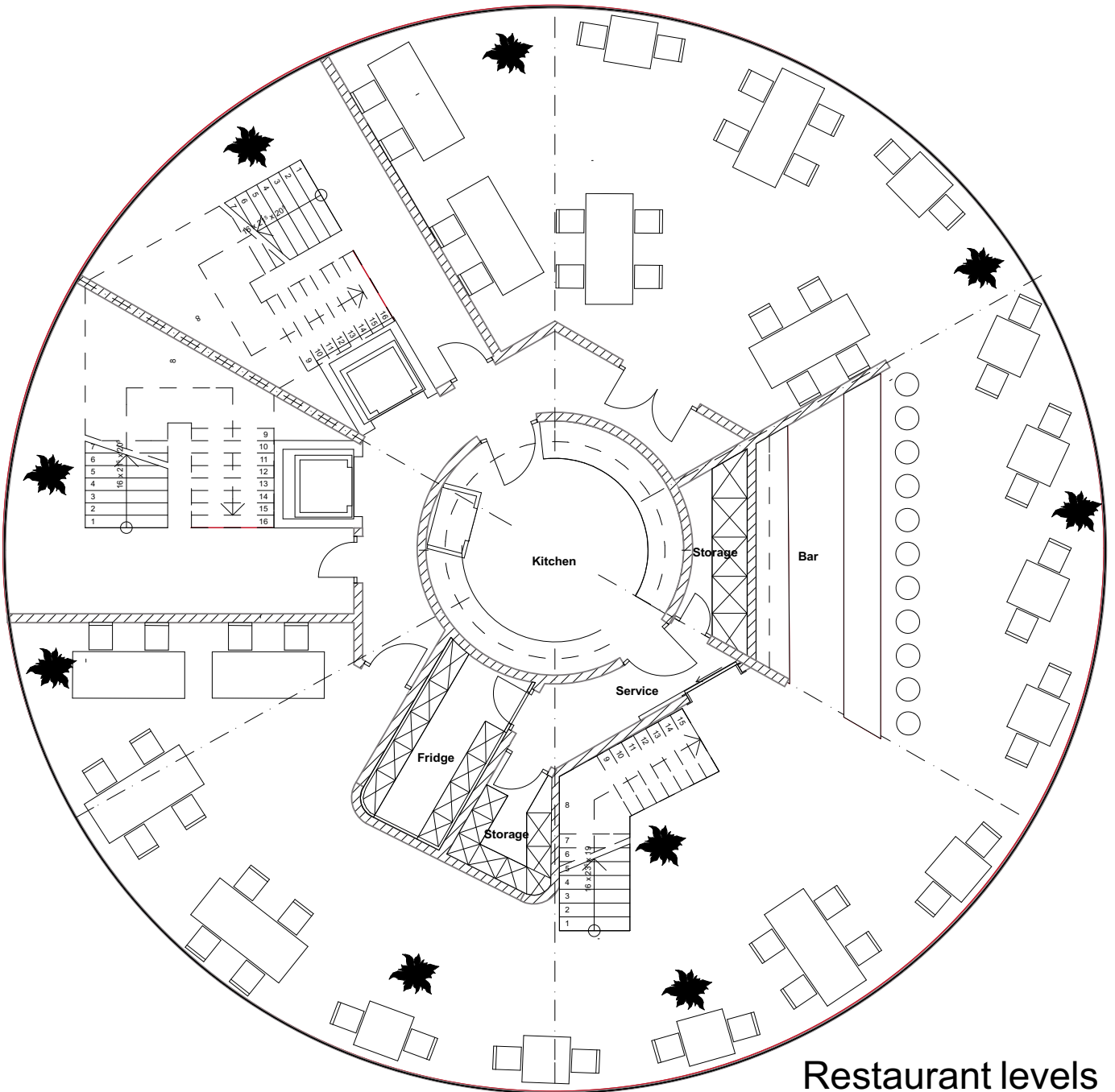
General Informations

The 360 ° Lighthouse Hotel has 23 floors.
Height total : About 74 m.

Floor 1: Technic	ca. 273 m ²
Floor 2: Wellness	ca. 273 m ²
Floor 3: Impulse Power Unit floor	ca. 273 m ²
Floor 4: Lobby	ca. 162,40 m ²
Floor 5-6 : Restaurant	ca. 420 m ²
Floor 7-23: Hotel suites	17 floors x (2 Deluxe suites) = 34 Deluxe Suites a 51m ² 17 floors x (2 normal suites) = 34 norm Suites a 39 m ²

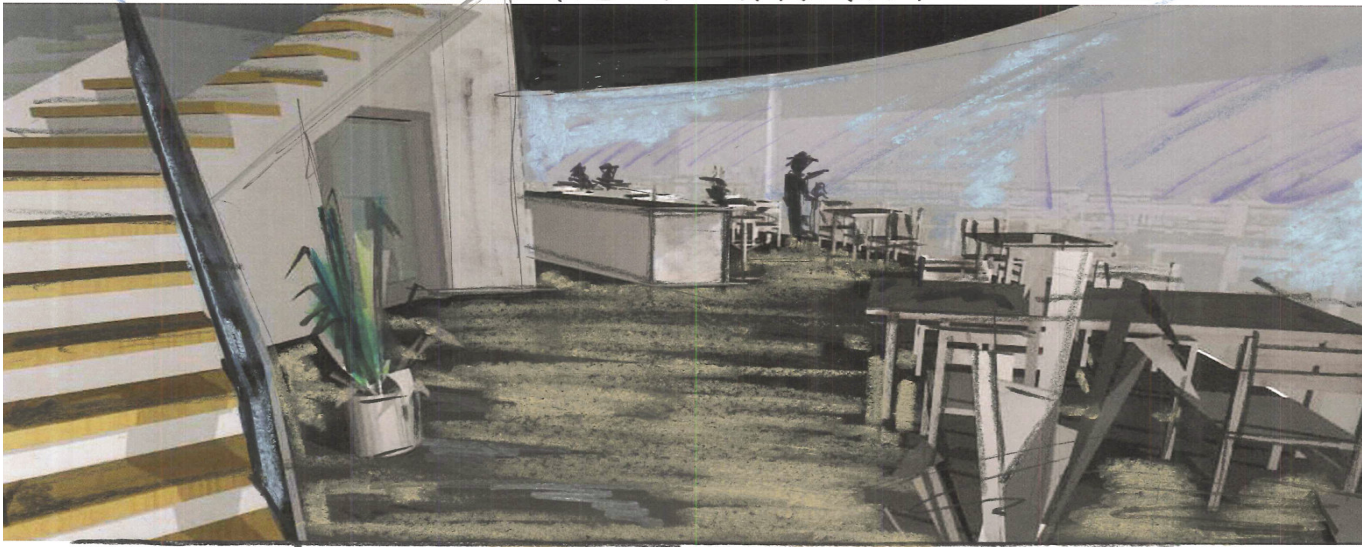
15.8.15



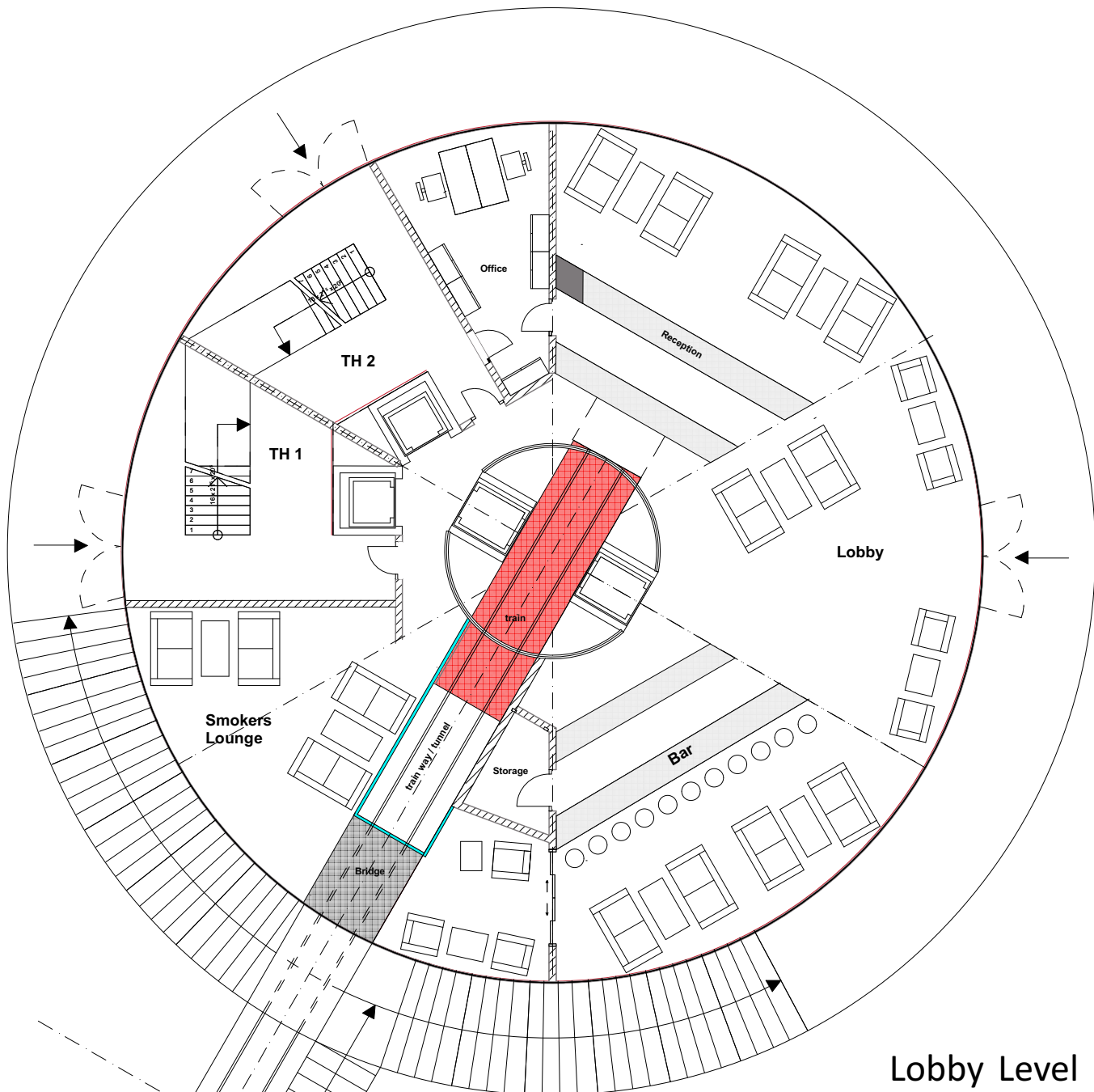


Restaurant levels

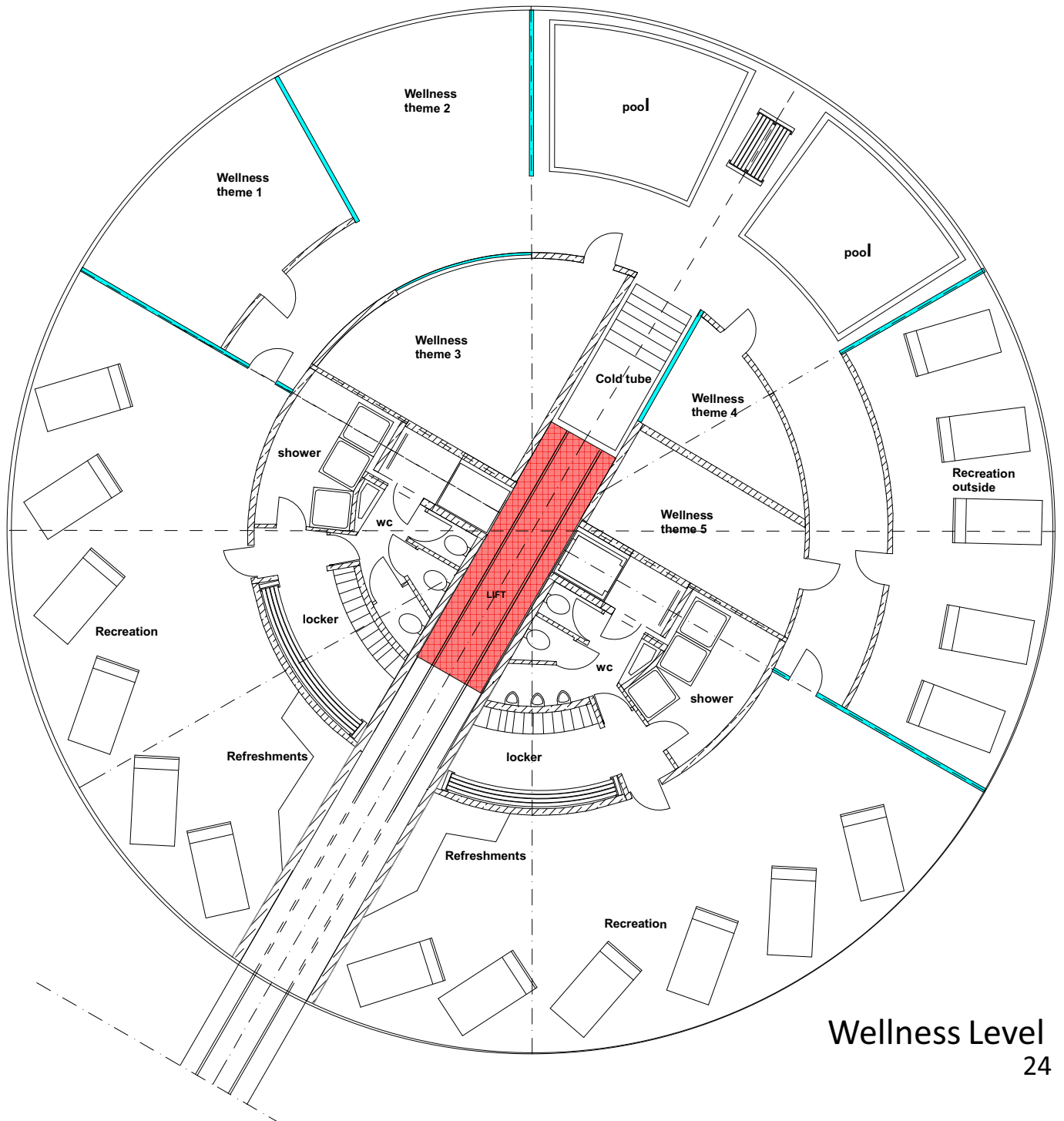
RESTAURANT



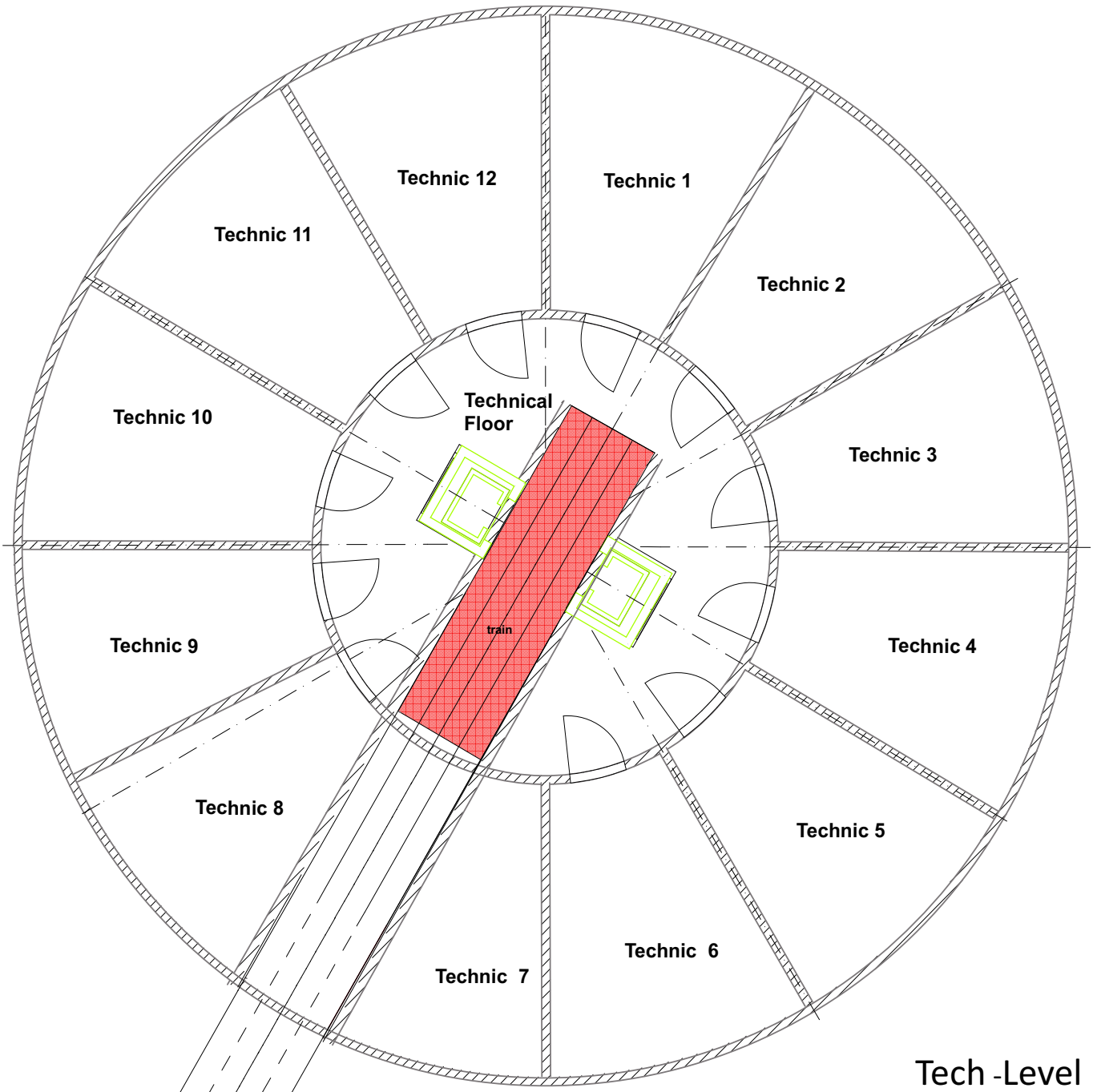
→ Styl. 15.



Lobby Level



Wellness Level
24



Tech -Level

Curriculum vitae Heinz Julen



1964

Born on 29. February in Zermatt, Switzerland

1980

Started building his first mountain workshop in Findeln

Early attempts at painting and mixed-media compositions with objects

1982–83

Attended preparatory classes at the School of Fine Arts in Sion

1984

Opening of Heinz Julen Gallery, built by Heinz Julen in the basement of a clothes shop in the heart of Zermatt; only his own works (furniture, paintings, sculptures) were exhibited

1986

Exhibition of sculptures on various mountain peaks around Zermatt for film/photography

1987

First workshop in Zermatt built

1988

Exhibition at Rieder Gallery, Munich, Germany (objects and paintings)

1989

- Expansion of the mountain workshop in Findeln

- Three-month stay in New York

Curriculum vitae

1990

- Conversion of the Rudenhaus in Zermatt
- Expansion of the mountain workshop in Findeln
- Exhibition in Zurich: in the context of the international Women's Tennis Tournament, sponsoring was obtained from the Tages-Anzeiger Group for a gallery to be built there to exhibit Heinz Julen's furniture objects, drawings, sculptures, collages

1991

First exhibition at Andy Jllien Gallery, Zurich (religious objects and sculptures, drawings, photos)

1992

- **Opening of the Vernissage cultural center in Zermatt, planned and built by Heinz Julen**
- Opening exhibition: Respekt (Respect, work by Heinz Julen, with catalogue)

1992–96

Director of the Vernissage cultural center. Organisation of various international concerts and exhibitions

1993

- Religious work with representations of Jesus and Mary
- One-month stay in Israel
- Exhibition at Vernissage, Zermatt: Seven Private Houses
- Exhibition at Ludger Vlatten Gallery, Heidelberg, Germany
- Building of a workshop in the industrial zone in Zermatt from the remainders of the Zermatt art
deco train station
- Exhibition at Andy Jllien Gallery, Zurich: Frigorsessel
- Fountain sculpture Überfluss (Overflow); gift to the population of Zermatt

Curriculum vitae

1993/94

Building of View House in Zermatt

1994

- Development of Cube Systems (object/commodities/household utensils)
- Exhibition at Wälchli Gallery: Bergwürfel (Mountain Cube) (objects)
- Exhibition at Schöneegg Gallery, Basel (objects, paintings)

1996

- One-man-show at Kunst 96, Zurich (Andy Jllien Gallery): Bergwürfel (Mountain Cube)
- Presentation of Cube Systems at Möbel Strebel AG, Aarau and at Kornschütte Lucerne
Building of Affenkasten, a mobile bar in Aarau, Switzerland

1997

- First plans for INTO the hotel and accessing the hotel grounds by means of a tunnel
- Opening of the Enzo-Vrony restaurant in Zermatt (conversion of a 200-year-old Valaisan house)

1998

Construction work starts on INTO the hotel

1999

Opening of the Cœur des Alpes hotel in Zermatt (concept, planning and partial completion)

2000 29/02

- Opening of INTO the hotel in Zermatt
- Exhibition at Kunst 2000, Zurich: Der letzte Raum einer Vision (The Last Room of a Vision)
- Exhibition at the Vernissage, Zermatt: Der letzte Raum einer Vision (The Last Room of a Vision)

2001

Completion of INTO staff houses and of a loft in Zermatt

Curriculum vitae

2002

- Exhibition at Malmö Art Museum: The Last Room of a Vision
- Invitation to speak at Cimes 2002 in Courchevell on the subject of Perspectives pour un nouveau siècle de sports d'hiver (Perspectives on a New Century of Winter Sports)? Invitation by Michel Clivaz to speak at Château Mercier in Sierre, Valais? Presentation of Matterhorn Highway Stadium to the municipality of Zermatt (in cooperation with Michel Clivaz)

2003

- Invitation to speak at the Ecole d'architecture de Grenoble, France: Naissance d'un mythe (Birth of a Myth)
- Project design for hotel in Bouznika (in cooperation with Michel Clivaz)
- Invitation to speak at the Ecole polytechnique fédérale de Lausanne. EPFL: The Destroyed Project
- Invitation to speak at UQAM (University of Quebec in Montreal) on A Marriage of Art and Invited by Daniel Gauthier, founder of Cirque du soleil, to participate in project studies for Le Massif, a skiing resort in Quebec combining art and sports

2004

- Cooperation on designing Le Massif skiing resort by Daniel Gauthier
- Project proposal for hotel The Swiss Cottage in Verbier (in cooperation with Michel Clivaz)
- Design presentation at Contemporary Art Fair in Strasbourg, France

2005

- Exhibition Portrait d'architecture (Architectural Portrait) at Fondation Braiard, Geneva
- Project proposal for museum entrance, Zermatt
- Cooperation with Ueli Lehmann: invited to submit project proposal for architectural contest for the Little Matterhorn, 1st place, Founding of PEAK Architekten

Curriculum vitae

2006

Amsterdam Congress Meeting Center: interior design
Opening of a shop in Zermatt - www.heinzjulen.com

2007

Project presentation for hotel in Tibet at 5,000 masl, 1st prize

2008

- Architectural studio, Heinz Julen Idee, established in Zermatt
- **Opening, Restaurant Rüsterei, Zürich**
- **Opening, Snow Boat café-bar, Zermatt**
- Heinz Julen artist portrait in the New York Times, USA

2009

- **Hotel Focus, Zermatt: design, planning, interior**
- **Extension, Hotel Coeur des alpes, Zermatt**
- **Opening, Baracca Zermatt projects, Basel and Zürich, Switzerland**
- Guest speaker at the International Symposium on Sustainable Tourism Development, Quebec, Canada
- **Planning and construction, Backstage Boutique Hotel, Zermatt.**
- **Extension, Vernissage cultural centre, Zermatt (opened 1991)**

2010

- **Opening, Backstage Boutique Hotel, Zermatt, Switzerland**

2011

- Opening, Heinz Julen Shop, Amsterdam, Netherlands, October 2011

2013

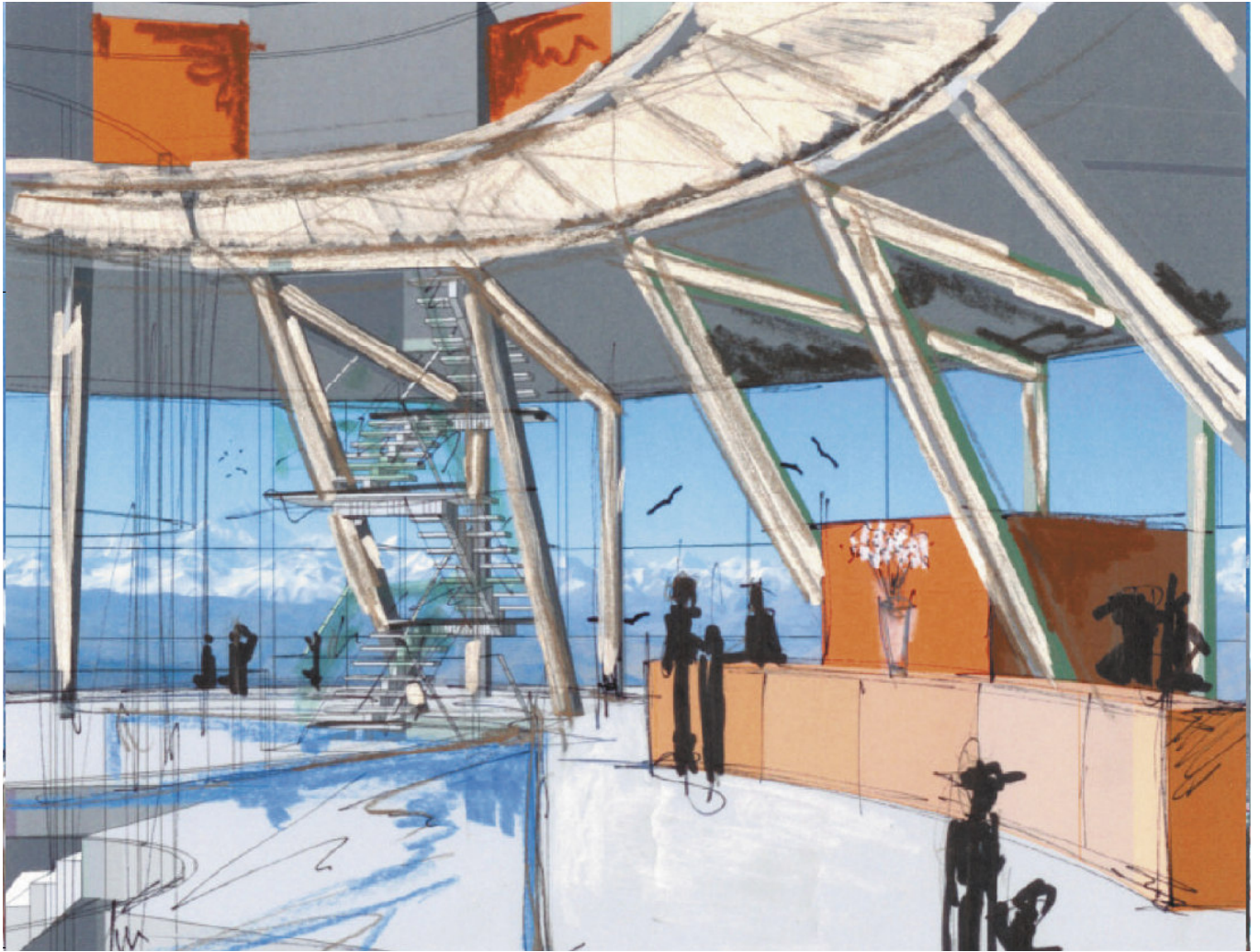
- **Construction of the Backstage Chalais**

2013 / 14

- **Construction of the Backstage Luxury Loft**

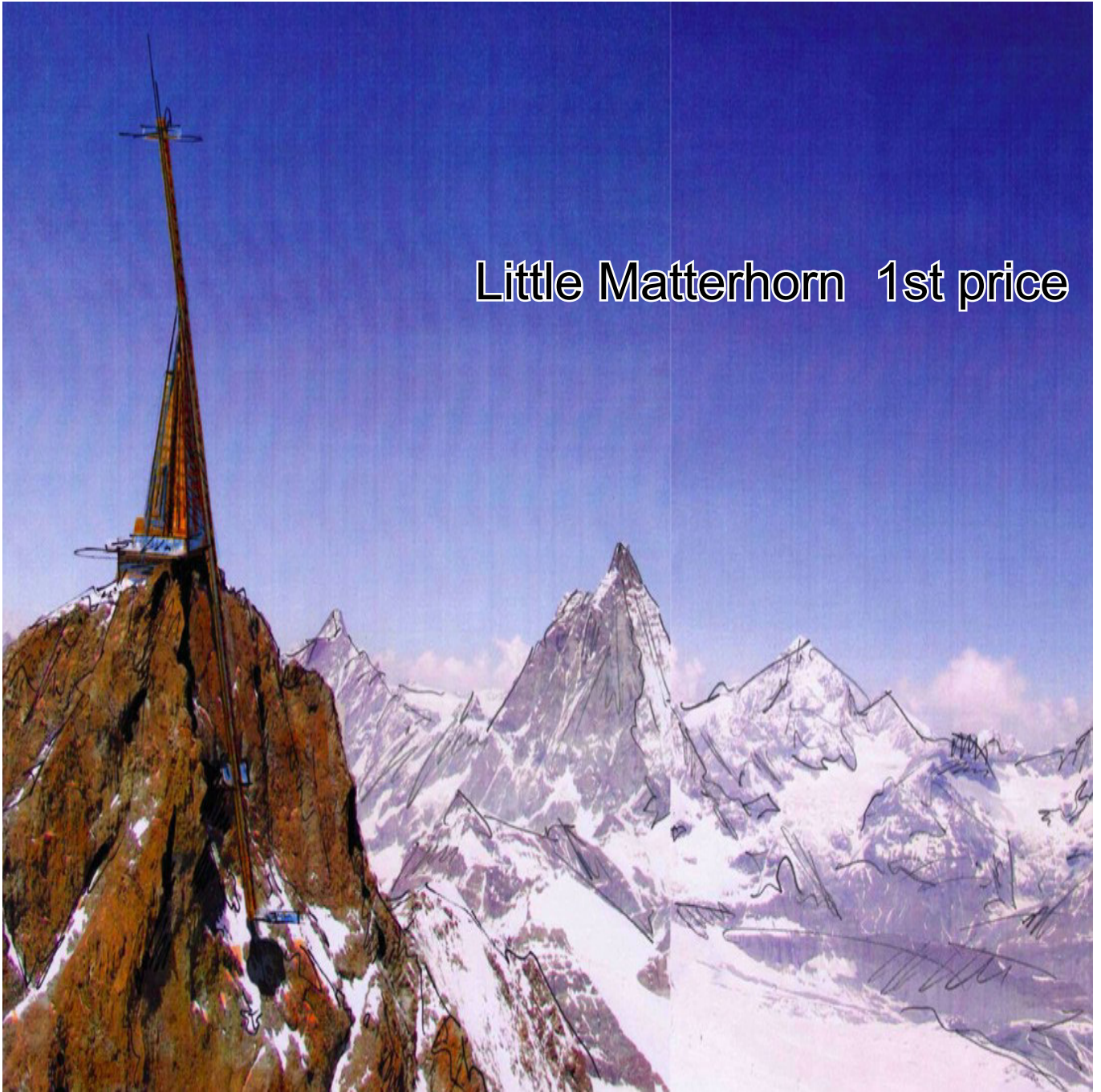


Hotel - Studies - Competition



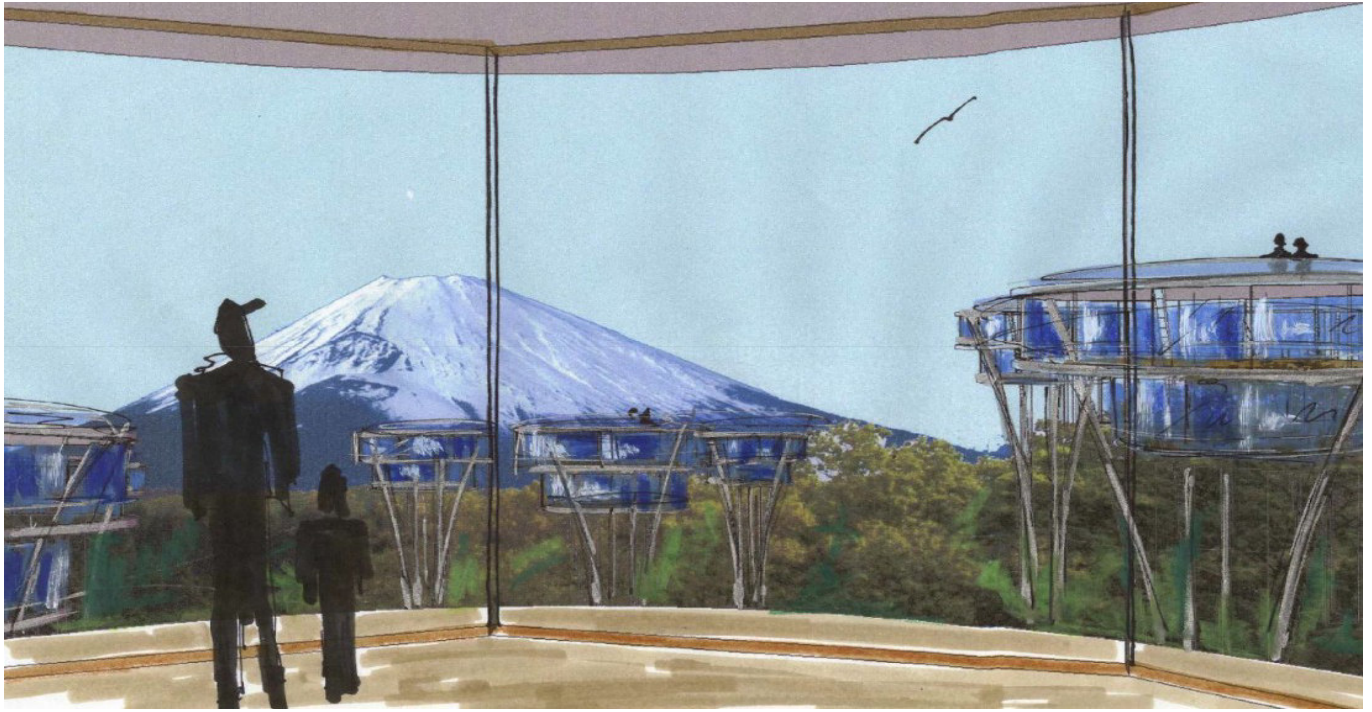
Hotel - Tibet - 1st price

Little Matterhorn 1st price





Hotel - Flower Power



heinzjulen.com